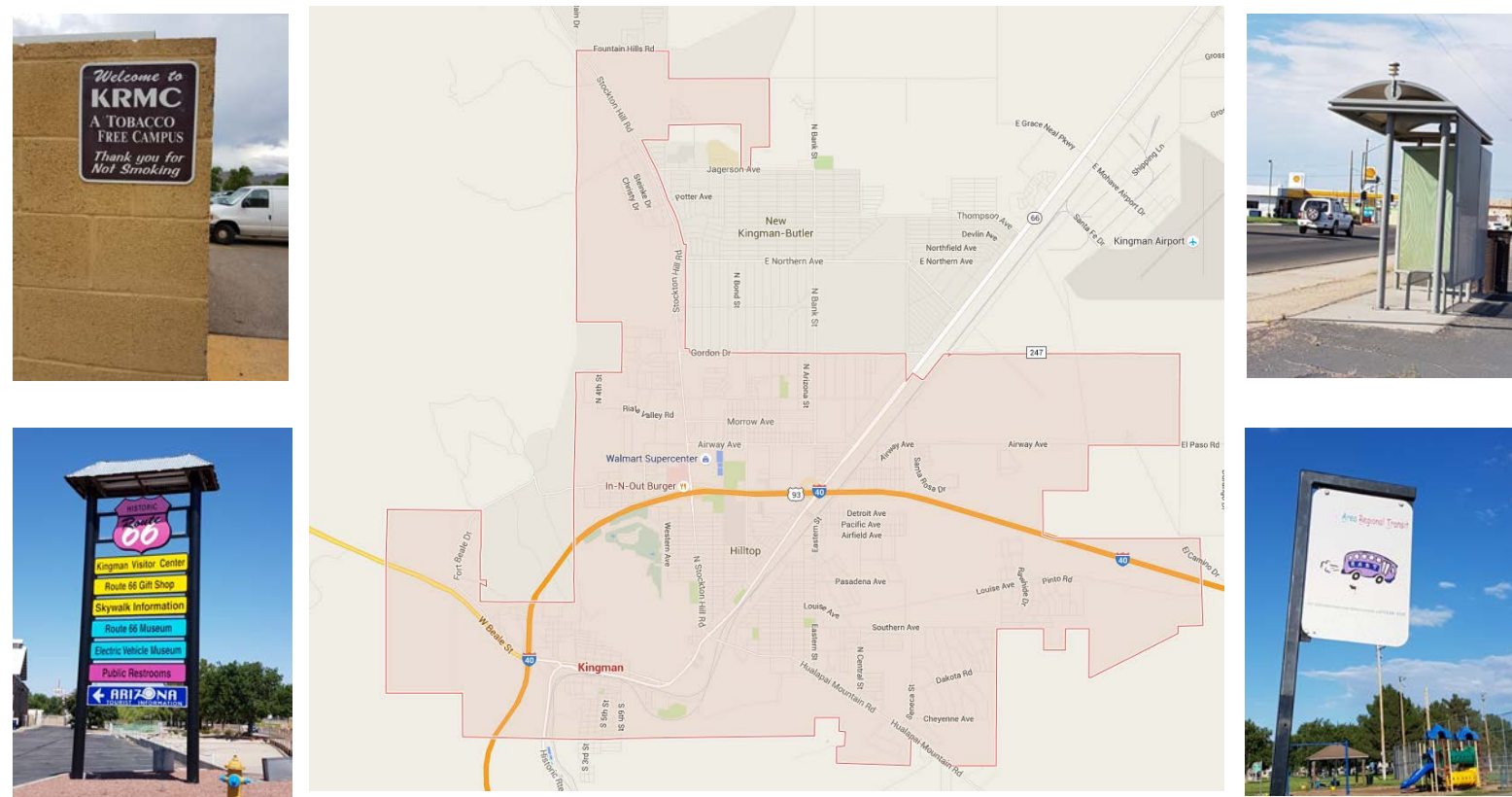


Introduction

- Kingman, AZ is a rural city located in northern Arizona with a population of 28,068.
- Population density: 806.1 persons/sq. mile
- There is one hospital (Kingman Regional Medical Center) that works in collaboration with the Mayo Clinic.
- Kingman is an intersection point between three major cities: Phoenix, Las Vegas, and Los Angeles.



Methods

Data Collection Procedure

Primary:

- Color Pictures were taken during windshield survey in June-July 2016
- Windshield surveys were conducted on weekday evening and weekend morning
- Windshield surveys were performed by making observation while driving to all the parks and public schools located in Kingman, AZ. Picture of houses, street signs, and store signs were taken while driving to random places
- Key informants interviews were conducted with individuals from the Chamber of Commerce, the police station, the library, Kingman Regional Medical Center, and in the parks

Secondary:

- Historical information was obtained through Kingman's New Resident's Guide, Kingman's Business and Community Guide, and online resources
- Data collected included: population, income, housing, employment were obtained from Bureau of Labor Statistics and United States Census Bureau websites.

Objectives

To conduct a community health assessment at a rural city

Results

Table 1: Demographics: Population by Age

	Kingman	Arizona	U.S.
Median Age	42.7	36.5	37.4
Median Age, Male	40.7	35.5	36.1
Median Age, Female	45.2	37.8	38.8

Fig. 1: Population by Races

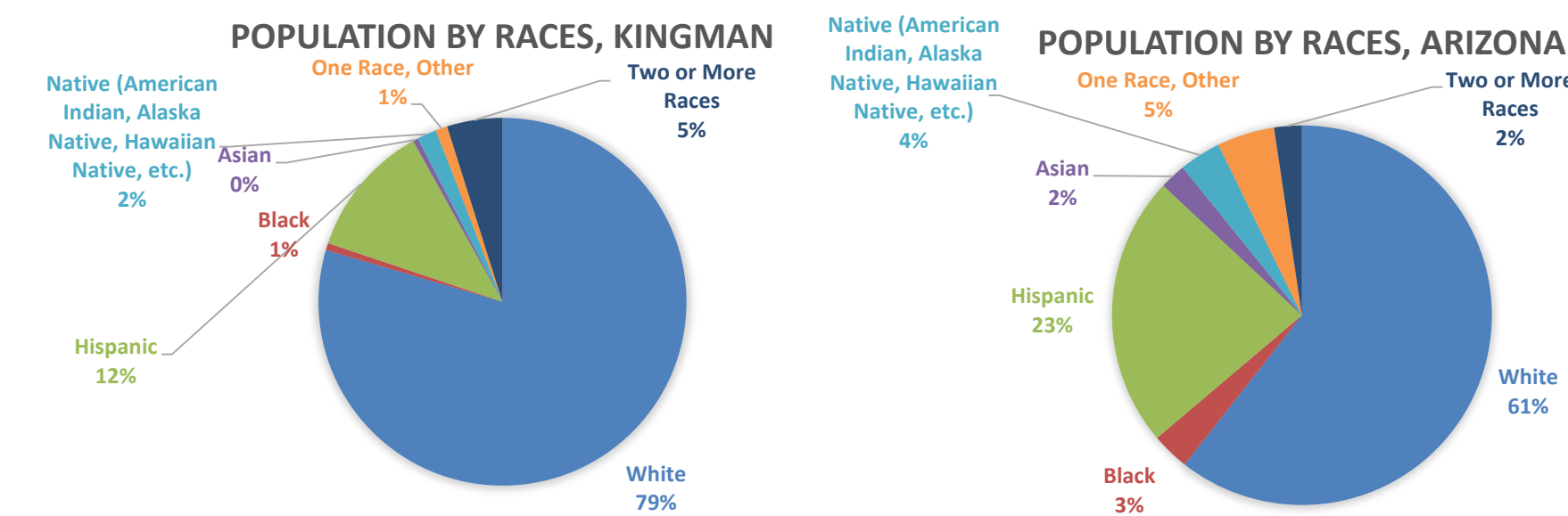


Table 2: Income Information

	Kingman	Mohave County	Arizona
Median household income	\$42,859	\$38,456	\$49,928
Median earnings male	\$42,620	\$39,147	\$45,500
Median earnings female	\$36,906	\$30,883	\$37,493
Unemployment rate	6.60%	6.70%	5.60%
Poverty level	21.0%	19.9%	18.2%

Table 3: Access to Primary Care

	Kingman	Mohave County	AZ	U.S.
Total Population, 2013	28,466	203,030	6,626,624	316,128,839
Primary Care Physicians, 2013	13	96	4,399	239,500
Primary Care Physicians, Rate per 100,000 Population	47.28%	47.30%	66.40%	75.80%

Community Resources

Hospital

- Kingman Regional Medical Center (KRMHC) is a non-for-profit hospital and works in collaboration with the Mayo Clinic
- KRMHC has 235 beds and is the only hospital in Kingman, AZ
- KRMHC had 46,448 patients visited the emergency room and there was a total of 8,493 admissions. 1,726 inpatient and 2,639 outpatient surgeries were performed in 2015
- There are also an outpatient Veterans Affairs Clinic, urgent care centers, Hualapi walk-in clinics, and two mental health clinics

Police

- One police department with 32 police officers and one K-9
- Total of 166 felony cases
- There was a 66% decrease in burglaries, 17% decrease in theft, 1% increase in adult and juvenile arrests, 41% increase in sexual assaults and 31% increase in robberies.
- There was also a 5% increase in marijuana, heroin, methamphetamine, and prescription drug abuse

Recreation

- 7 fitness center
- 13 public parks
- 1 public pool

Media

- Newspapers in Kingman include the Kingman Daily Miner and The Standard Newspaper

Results continued

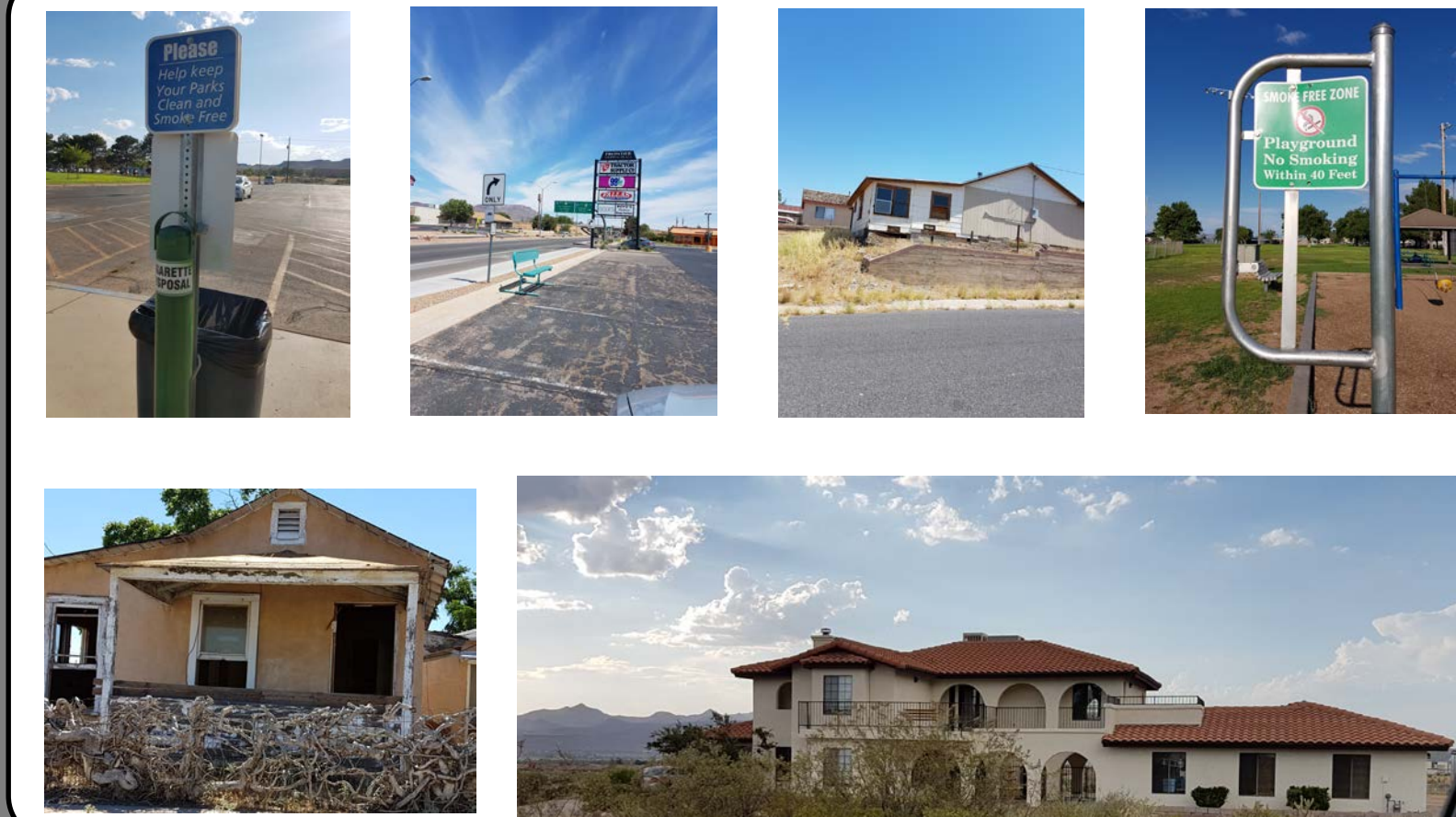
Table 4: Education

	Kingman	Arizona	U.S.	
Total 25 Years and Over Population	20,013	100.00%	4,284,776	209,056,129
Less Than High School	2,733	13.66%	14.11%	13.67%
High School Graduate	6,607	33.01%	24.51%	27.95%
Some College or Associate Degree	7,930	39.62%	34.29%	29.09%
Bachelor Degree	1,527	7.63%	17.13%	18.27%
Master, Doctorate, or Professional Degree	1,216	6.08%	9.97%	11.01%

Table 5: Adult's Health

	Mohave County	AZ	U.S.
Percent Adults with Asthma	13.1%	13.8%	13.4%
Percent Adults with Heart Disease	4.9%	4.0%	4.4%
Percent Adults Overweight	37.8%	36.8%	35.8%
Percent Adult Obesity	30.4%	26.2%	27.5%
Percent Adults with Poor Dental Health	26.9%	13.2%	15.7%

Windshield Survey



Community Concerns

- The community needs more homeless shelters, well-paved roads, higher-paying professions, exercise classes for young children, and pediatricians
- Parents had expressed the lack of money for the schools and the lack of schools with high academic performance
- The community is also concern that if high-tech jobs are brought into Kingman, AZ there will be a population boom or explosive population growth.

References

- Kingman, AZ Population and Races. (2016, November 2). Retrieved from <http://www.usa.com/kingman-az-population-and-races.htm>.
- Lake Havasu City - Kingman, AZ. (2016, November 4). Retrieved from http://www.bl.gov/eag/eag_az_lakehavasu-city_msa.htm.
- Sales and Membership Specialist from Chamber of Commerce. (2016, Month date). Personal interview.
- Kingman Police Department. (2016). Kingman Police Department 2015 Annual Report. Retrieved from http://www.cityofkingman.gov/Portals/0/docs/cok/depts/kpd/reports/kpd_ar2015.pdf
- Kingman Regional Medical Center. (2016). Retrieved from <http://health.usnews.com/best-hospitals/area/az/kingman-regional-medical-center-6860150>.
- Theobald, D. (2012). A Community Health Nurse Role with Cardiopulmonary Resuscitation. Retrieved from www.slideshare.net/ADKHW/community-health-assessment-11475092.
- Westerberg, J.M. (2011). Community Health Assessment Palmerston North Hospital Area. Retrieved from www.slideshare.net/kiwes8/community-health-assessment-11475092.
- Chronology of Mohave County: A Chronicle of Historic Events in and around Kingman Arizona. (2012). Retrieved from www.mohavemuseum.org/chrono.htm.
- Kingman, Arizona! Information: History & Local Facts. (2011). Retrieved from <http://kingmanarizona.info/history.htm>.
- Follow the Tracks to Kingman Arizona. (2011). Retrieved from <http://kingmanarizonatrains.com/>.
- Kingman, AZ (Arizona) Houses and Residents. (2016). Retrieved from <http://www.city-data.com/housing/houses-Kingman-Arizona.html>.
- U.S. Census Bureau (2010). United States Total Population. Retrieved November 2, 2016 from http://factfinder.census.gov/faces/nav/jsf/pages/community_facts.xhtml
- U.S. Census Bureau (2010). Population, Housing Units, Area, and Density: 2010 State--Place. Retrieved November 2, 2016 from http://factfinder.census.gov/faces/tableservices/jsf/pages/productview.xhtml?pid=DEC_10_SF1_GCTPH1.L1138prodType=table.

For more information please contact: Yvonne W. Ng
yvonneng@pharmacy.arizona.edu